

Biological Classification

Set – 1

Characters	Five Kingdoms				
	Monera	Protista	Fungi	Plantae	Animalia
Cell type	Prokaryotic	Eukaryotic	Eukaryotic	Eukaryotic	A
Cell wall	Noncellulosic (Polysaccharide + amino acid)	Present in some	B	Present (cellulose)	Absent
Nuclear membrane	C	D	Present	Present	E
Body organisation	Cellular	Cellular	Multicellular/loose tissue	Tissue/organ	Tissue/organ/organ system
Mode of nutrition	Autotrophic (chemosynthetic and photosynthetic) and Heterotrophic (saprophytic/parasitic)	Autotrophic (Photosynthetic) and Heterotrophic	Heterotrophic (Saprophytic/Parasitic)	Autotrophic (Photosynthetic)	Heterotrophic (Holozoic/Saprophytic etc.)

Q1. Select A, B, C, D and E respectively.

- A. Eukaryotic, Present with cellulose
- B. Eukaryotic, Present with Chitin, absent, present, present
- C. Prokaryotic, Present with Chitin, Absent, Present, Absent
- D. None of the above

Ans. (B)

Q2. Select A, B, C, D and E respectively.

- A. Eukaryotic, Non cellulosic, cellular, Autotrophic, Heterotrophic
- B. Eukaryotic, Cellulosic, acellular, Autotrophic, Heterotrophic
- C. Eukaryotic, Non cellulosic, acellular, Autotrophic, Heterotrophic
- D. Eukaryotic, Non cellulosic, cellular, Autotrophic, Autotrophic

Ans. (A)

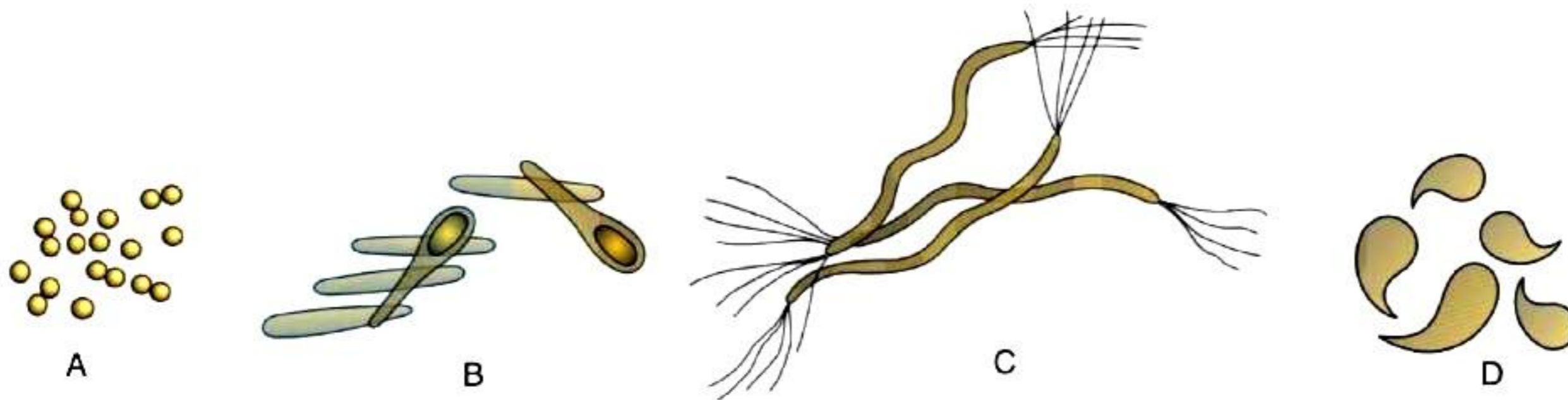


Q3. Select A, B, C, D and E respectively.

- A. Prokaryotic, Present in all, Chitin, absent, Multicellular/ loose tissue
- B. Prokaryotic, Present in some, Cellulose, present, Multicellular/ loose tissue
- C. Prokaryotic, Present in all, cellulose, present, Multicellular/ loose tissue
- D. None of the above

Ans. (B)

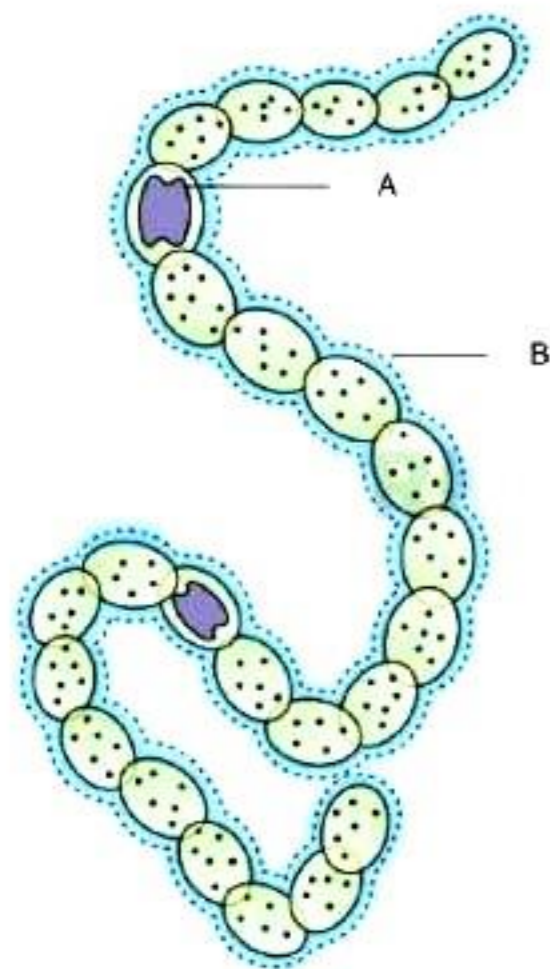
Q4. Select the correct name of each bacteria as A,B,C and D respectively.



- A. Cocci, Bacilli, Spirilla, Vibrio
- B. Spirilla, Vibrio, Cocci, Bacilli
- C. Cocci, Spirilla, Vibrio, Bacilli
- D. Vibrio, Bacilli, Cocci, Spirilla

Ans. (A)

Set – 2



Q1. What is A and B respectively?



- A. Heterocyst, Mucilin
- B. Sheath, heterocyst
- C. Heterocyst, Mucilaginous sheath
- D. None of the above

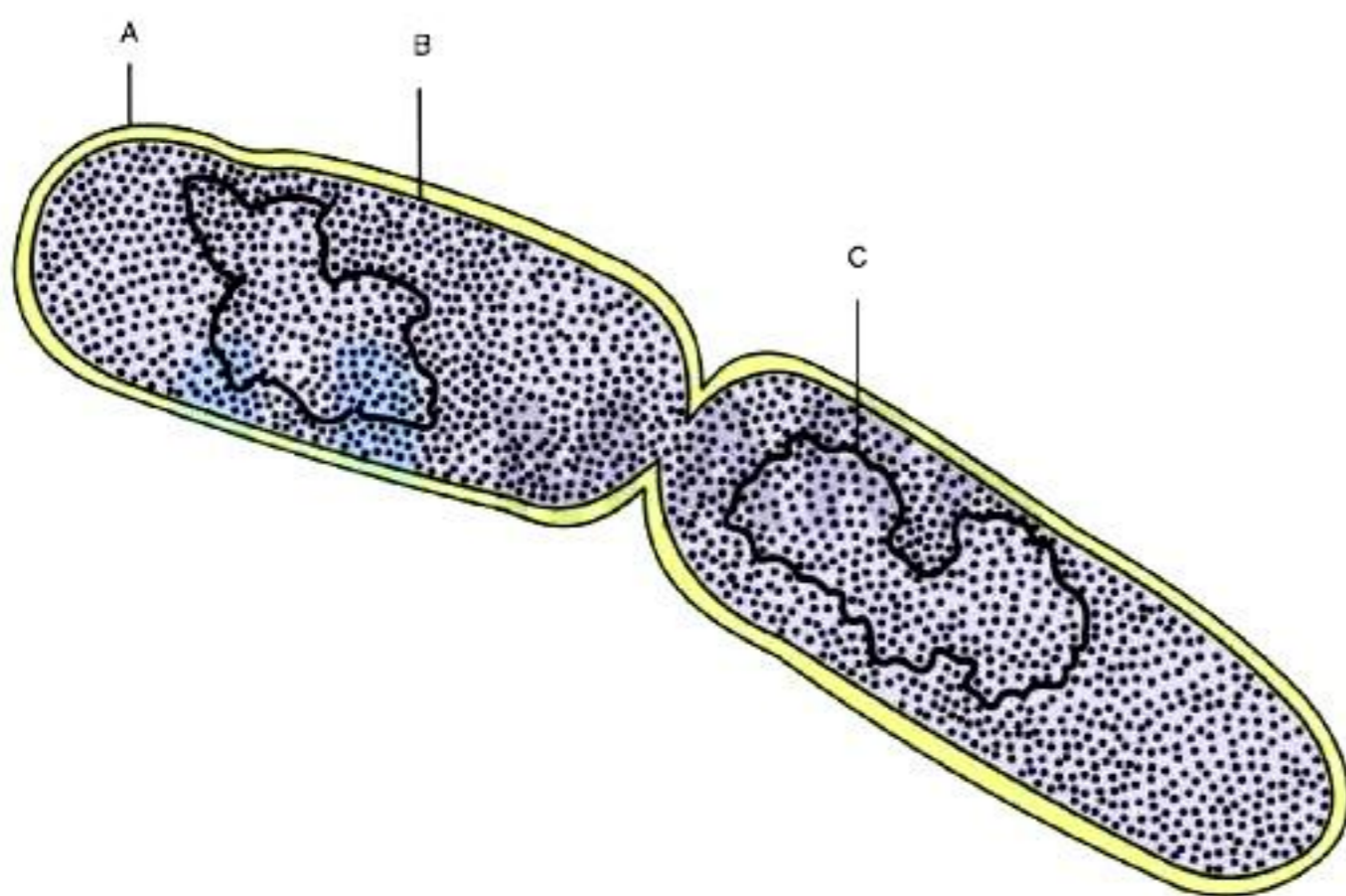
Ans. (C)

Q2. Select the correct statement about the following figure.

- A. and
- B. The figure is Anabaena.
- C. are correct.
- D. Both

Ans. (D)

Set – 3



Q1. A, B and C in the given figure are respectively:

- A. Cell Membrane, Cell wall, RNA
- B. Protoplast, Cell Wall, DNA
- C. Cell wall, Cell Membrane, RNA
- D. Cell wall, Cell Membrane, DNA

Ans. (D)

Set – 4

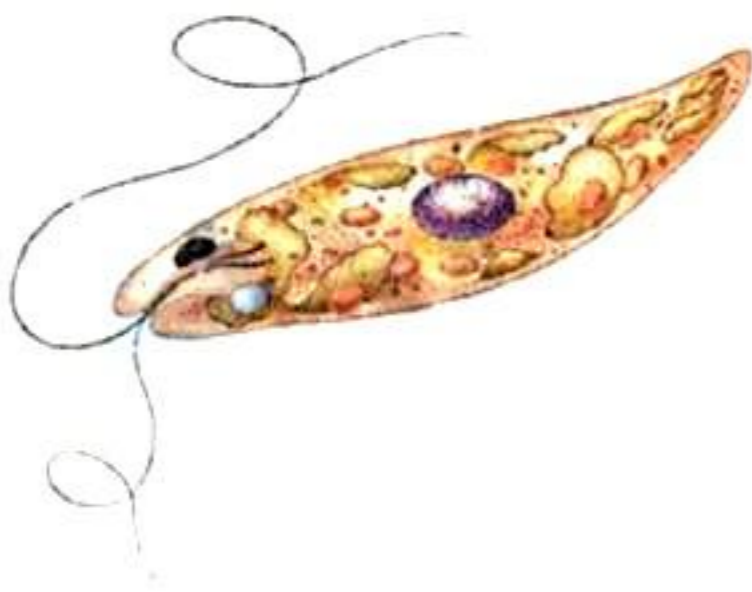


Q1. Select the name of the given organism.

- A. Dinoflagellates**
- B. Euglena**
- C. Slime mould**
- D. Paramecium**

Ans. (A)

Q2. Select the name of the given organism.

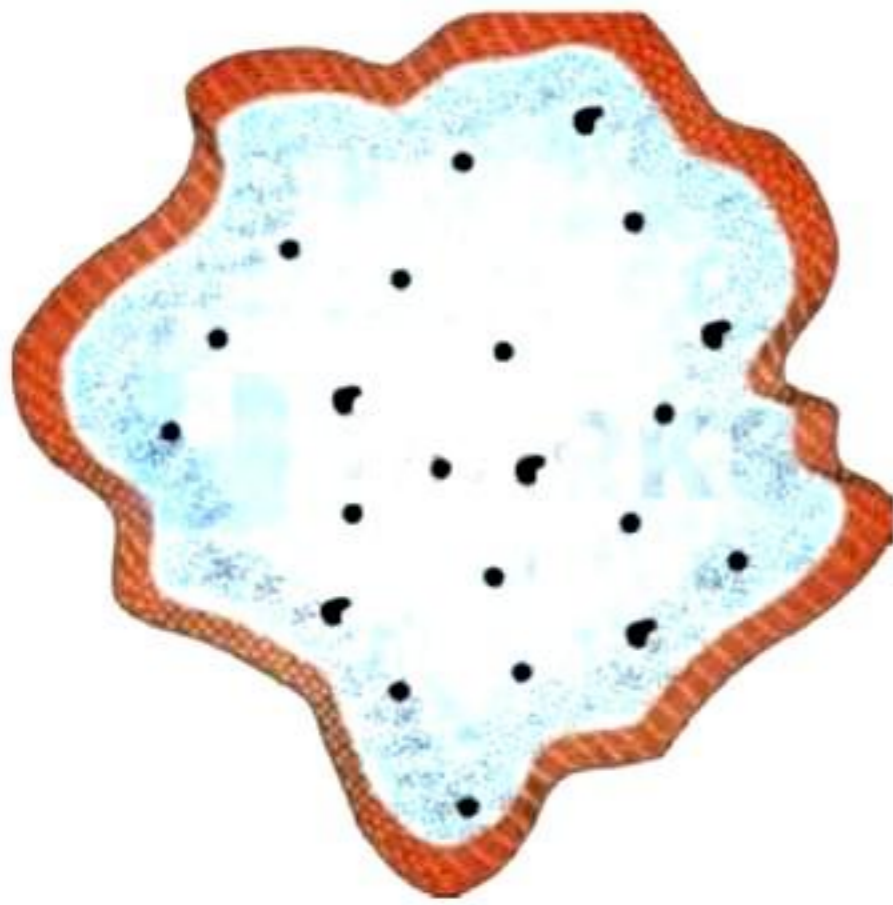


- A. Dinoflagellates**
- B. Euglena**
- C. Slime mould**
- D. Paramecium**

Ans. (B)



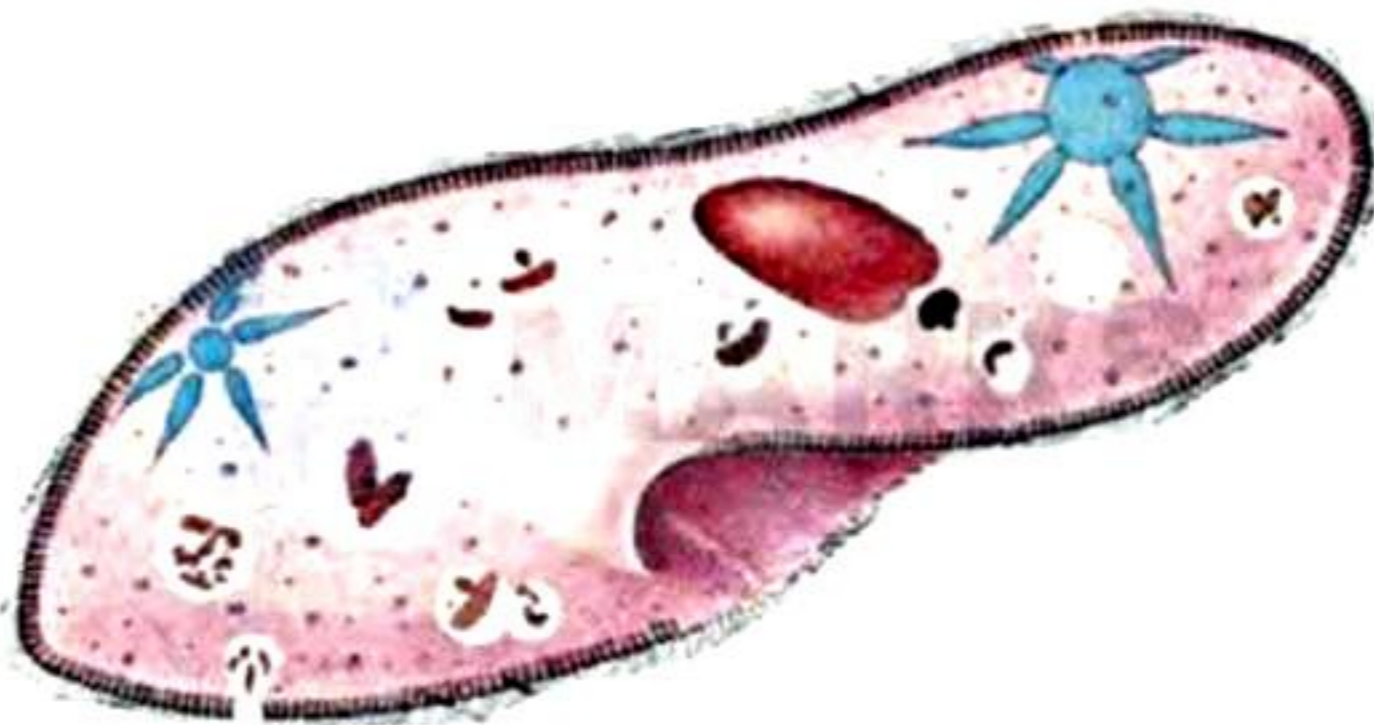
Q3. Select the name of the given organism.



- A. Dinoflagellates
- B. Euglena
- C. Slime mould
- D. Paramecium

Ans. (C)

Q4. The given protozoan comes under which category?

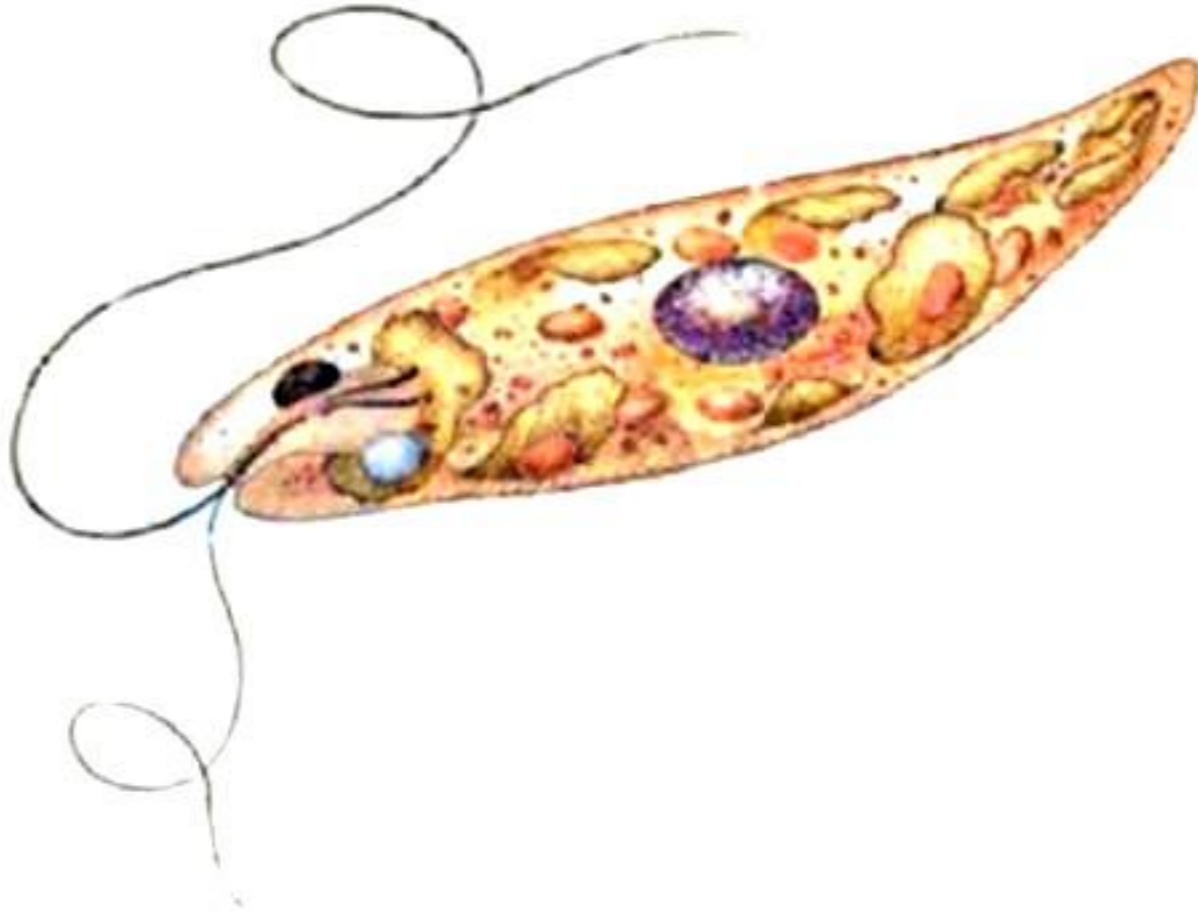


- A. Amoeboid protozoans
- B. Ciliated protozoans
- C. Flagellated protozoans
- D. Sporozoans

Ans. (B)



Q5. Study the given figure and select the wrong statement.



- A. They have two flagella, a short and a long one.
- B. They have a protein rich layer called pellicle.
- C. Majority of them are freshwater organisms found in stagnant water.
- D. Cell wall is present in them.

Ans. (D)

Set – 5



Q1. Select the type of Fungi shown in the figure.

- A. Phycomycetes
- B. Ascomycetes
- C. Basidiomycetes
- D. Deuteromycetes

Ans. (A)



Q2. What is the name of the organism shown in the figure?



- A. Claviceps
- B. Neurospora
- C. Ustilago
- D. Aspergillus

Ans. (D)

Q3. What is the name of the organism shown in the figure?



- A. Claviceps
- B. Neurospora
- C. Ustilago
- D. Agaricus

Ans. (D)

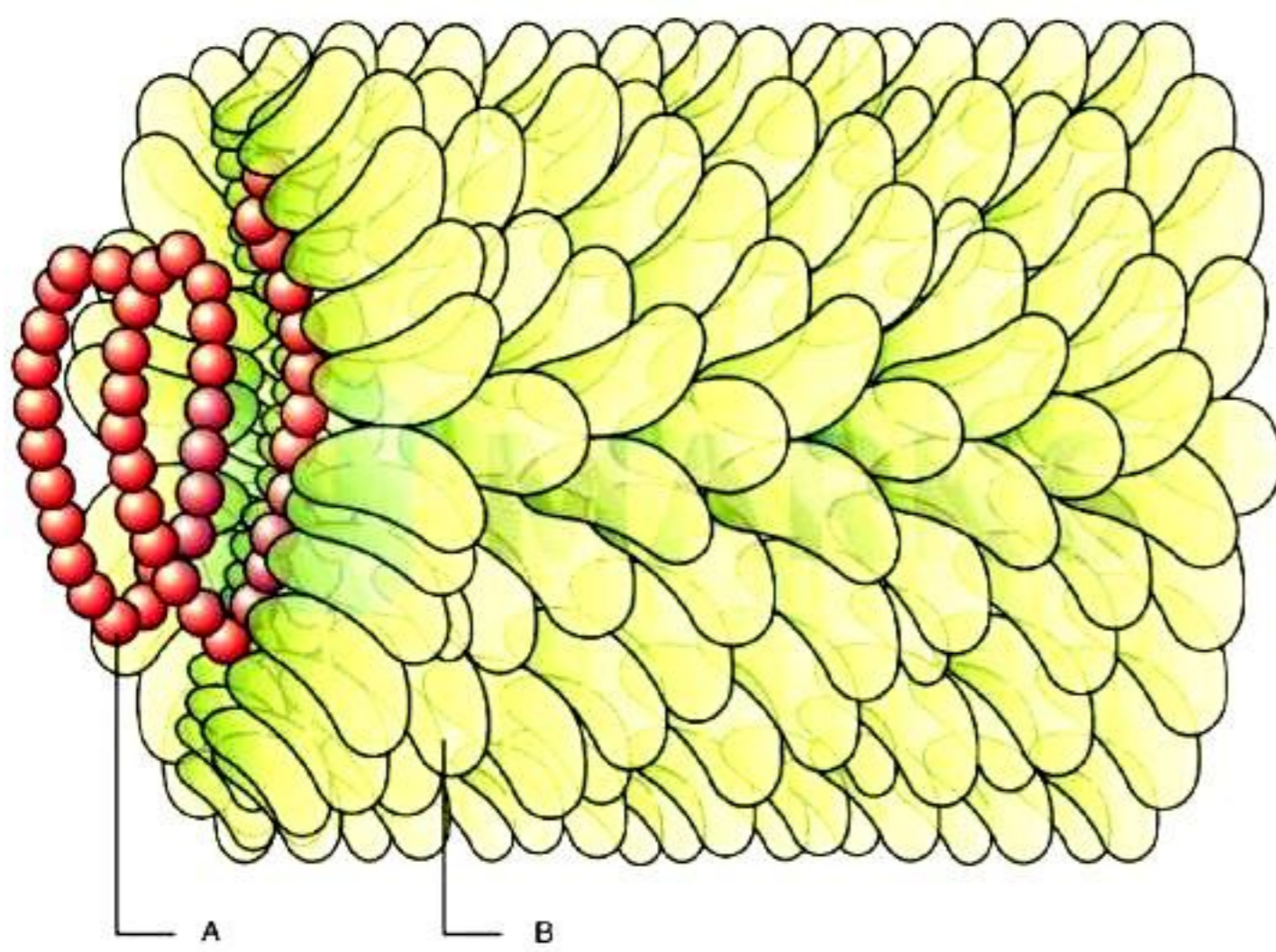
Q4. Select the correct characteristics of the following organism in the figure.



- A. The asexual spores are generally not found.
- B. The sex organs are absent, but plasmogamy is brought about by fusion of two vegetative or somatic cells of different strains or genotypes.
- C. Vegetative reproduction by fragmentation is common.
- D. All of the above.

Ans. (D)

Set – 6



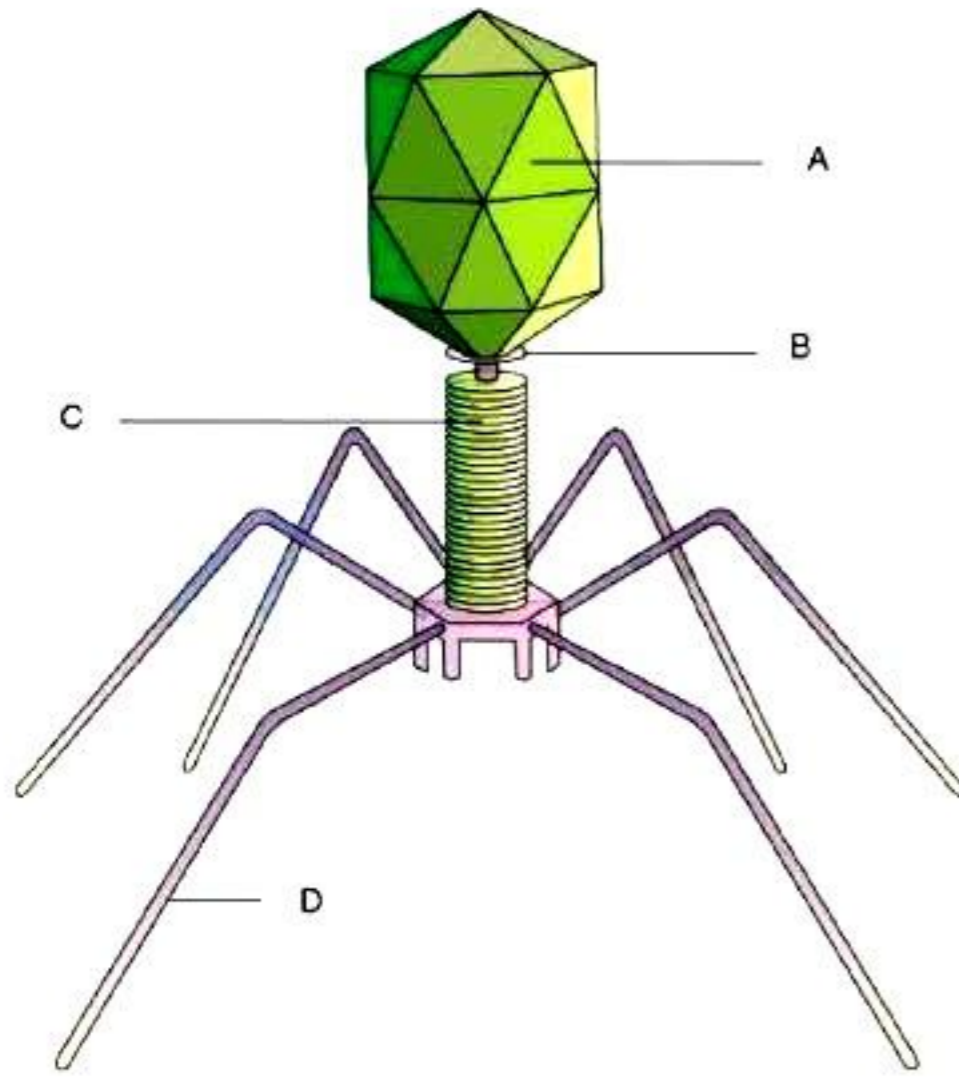
Q1. Select A and B respectively.

- A. RNA and Capsid
- B. DNA and Capsid
- C. Protein and Capsomere
- D. RNA and Capsomere

Ans. (A)



Q2. Select the correct labelling in the Bacteriophage as A, B, C and D respectively.



- A. Head, Neck, Collar, Tail fibres
- B. Crystal, Collar, Sheath, Tail
- C. Head, Collar, Sheath, Tail fibres
- D. Head, Collar, Sheath, Legs

Ans. (C)